

## 2.5mm-travel Horizontal Type ### Series

Part number	<b>002-0803-000</b>	
Changeover timing	Non shorting	
Travel	2.5mm	
Total travel	3.5mm	
Operating force	3±1.5N	
Mounting method	M2-screw	
Poles	2	
Operation	Latching	
Terminal type	Lead	
Operating temperature range	-10°C to +60°C	
Rating (max.)/(min.) (Resistive load)	0.2A 30V DC/50µA 3V DC	
Electrical performance	Contact resistance (Initial performance/After lifetime)	20mΩ max./40mΩ max.
	Insulation resistance	100MΩ min. 500V DC
	Voltage proof	500V AC for 1 minute
Mechanical performance	Terminal strength	5N for 1 minute
	Actuator strength    Operating direction	30N
Durability	Operating life without load	10,000 cycles 40mΩ max.
	Operating life with load (at max. rated load)	10,000 cycles 40mΩ max.
Environmental	Cold	-20°C 96h

---

performance

---

Dry heat	85°C 96h
----------	----------

---

Damp heat	40°C, 90 to 95%RH 96h
-----------	-----------------------

---

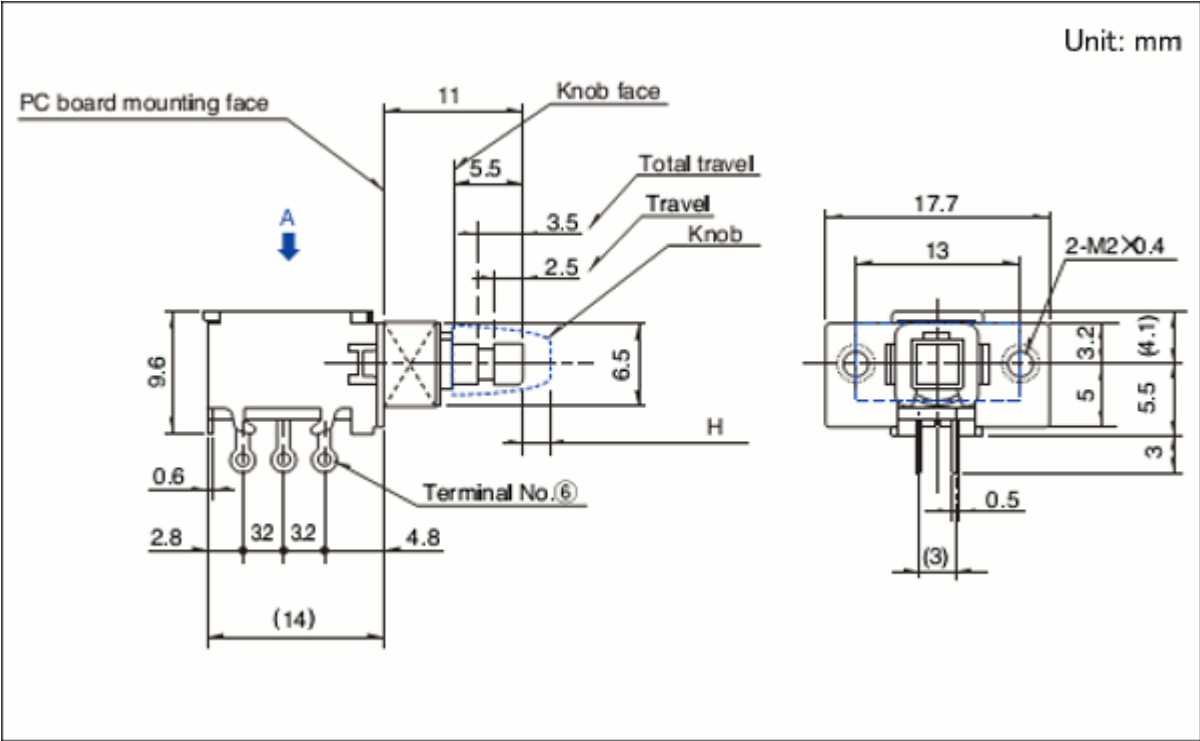
Minimum order unit (pcs.)	Japan	100
---------------------------	-------	-----

---

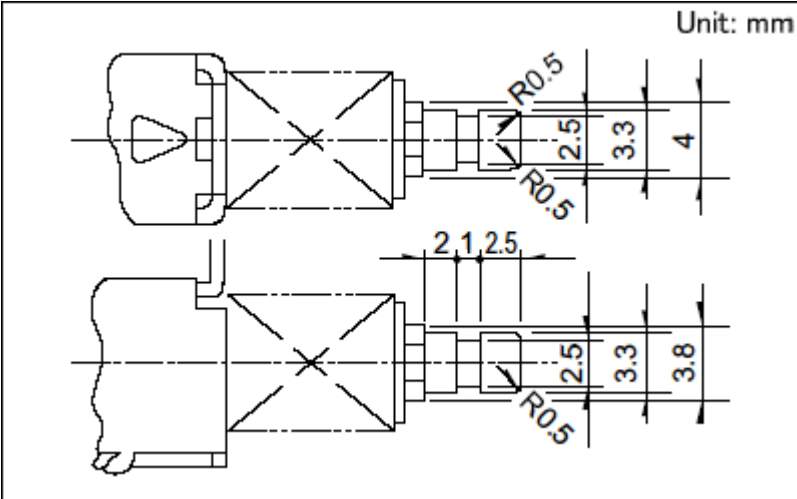
Export	2,500
--------	-------

---

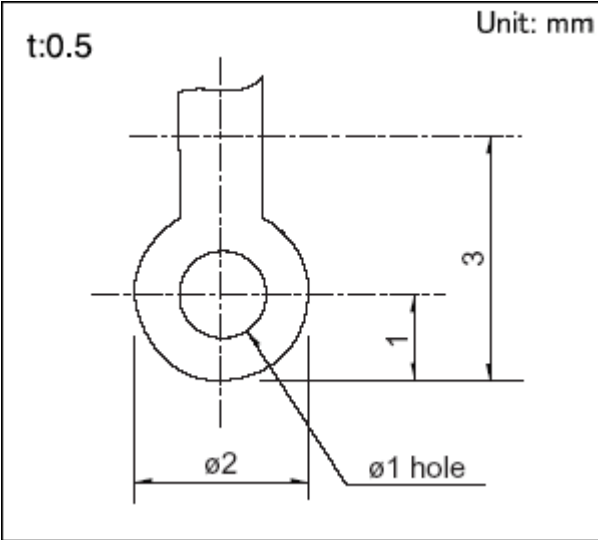
Dimensions



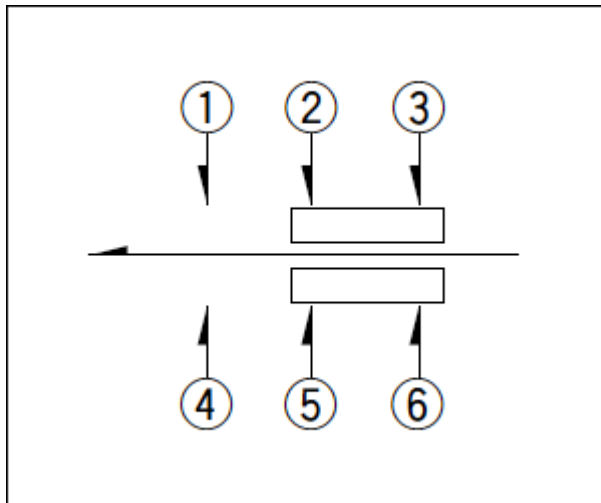
Actuator Configuration at Front Edge



Terminal Configuration



# Circuit Diagram



## Soldering Conditions

### Reference for Dip Soldering

---

Items	Preheating temperature	-
	Preheating time	-
Dip soldering	Soldering temperature	260±5°C
	Duration of immersion	10±1s

---

### Reference for Hand Soldering

---

Soldering temperature	350±5°C
Soldering time	3+1/0s

---