

CTS Guitar Series 24mm Potentiometer

Features

- Low Noise
- Robust Construction
- Proprietary Anti-Static Lube
- Brass Shaft
- Brass Bushing
- Smooth Feel
- Various Shaft Trims
- Wide Selection of Tapers
- Reduced Shaft Wobble
- Solderable Cover



Electrical and Mechanical Specifications

Resistance Values

25K Ω , 50K Ω , 100K Ω , 250K Ω , 500K Ω , 1M Ω

Resistance Tolerance

$\pm 10\%$, $\pm 20\%$

Resistance Tapers

See Resistance Taper Chart for Available Tapers

Rotational Torque

Standard Torque: 0.75-6.00 in.oz.

Low Torque: 0.50-2.00 in.oz.

Rotational Angle

Mechanical: Approx. 300°

See Resistance Tapers for Electrical Angle

Power Rating

0.25 watts @ 55°C

RoHS Compliant

Bushing

3/8" – 32 UNEF

.250", .375", or .500" long

Shaft Length

.500", .625", .750", or 1.00"

Shaft Trim

Round, Flat, or Slot & Knurled

Stop Strength

9 in. lbs. minimum

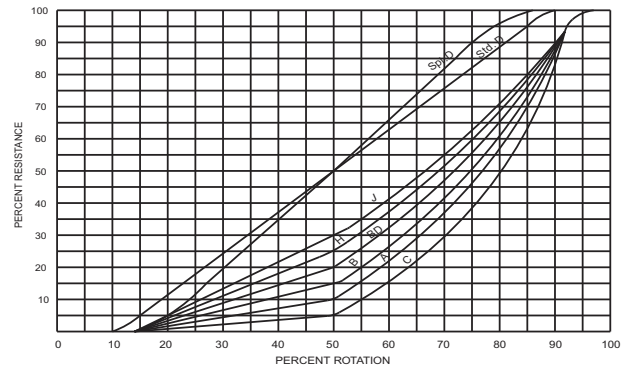
Shaft Push/Pull Strength

30 lbs. minimum

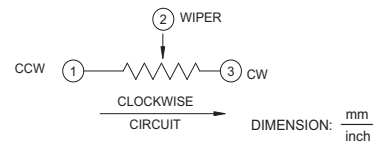
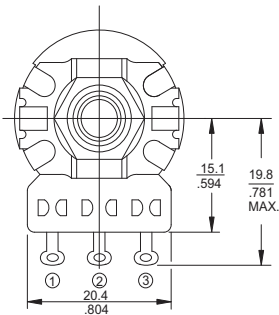
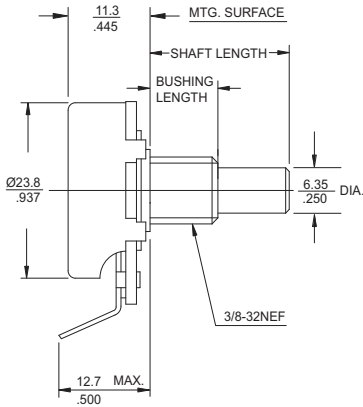
The CTS 450G Guitar Series Potentiometers are the same popular potentiometers used in guitars for years. This new series offers standard constructions for simplified ordering and pricing. CTS customized potentiometers are still available upon request.

Resistance Tapers

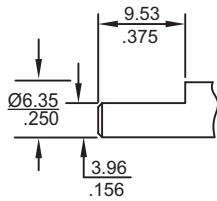
| Standard Linear and Tapered Curves (no taps) | | |
|--|-----------------------------|--|
| CTS Curve No. | % Resistance @ 50% Rotation | |
| Std. D | 50% | |
| Spl. D (EIA "S" Curve) | 50% | |
| C | 5% | |
| A | 10% | |
| B | 15% | |
| BD | 20% | |
| H | 25% | |
| J | 30% | |



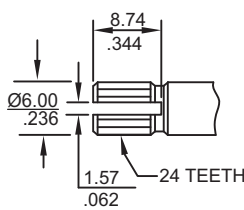
Metal Shaft, Bushing Mount, Solder Lug Terminals



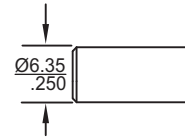
Shaft Trim



F - Flat



K - Slot & Knurled



R - Round

DIMENSION: mm/inch

Ordering Information

| | | | | | | | | |
|-----------------------|-------------------------------------|--|---|--|------------------------|--|--------------------------------|----------|
| 450G | T | 2 | 4 | K | 253 | B | 4 | S |
| TERMINAL STYLE | BUSHING LENGTH | SHAFT LENGTH | SHAFT TRIM | RESISTANCE CODE | TOLERANCE | TAPER | TORQUE | |
| T - SOLDER LUG | 2 - .250" 3 - .375" 4 - .500" | 4 - .500" 5 - .625" 6 - .750" 8 - 1.00" | R - ROUND F - FLAT K - SLOT & KNURLED | CODE RESISTANCE 253 25 K 503 50 K 104 100 K 254 250 K 504 500 K 105 1 M | A - ± 10% B - ± 20% | 1 - LINEAR (STD. D) 2 - 10% AUDIO (A) 3 - LINEAR (SPL. D) 4 - 15% AUDIO (B) 5 - 5% AUDIO (C) 6 - 20% AUDIO (BD) 7 - 25% AUDIO (H) 8 - 30% AUDIO (J) | S - STANDARD L - LOW TORQUE | |

Please consult factory for custom features not listed.